

**SCREENING REPORT FOR AN ENVIRONMENTAL AUTHORIZATION AS  
REQUIRED BY THE 2014 EIA REGULATIONS – PROPOSED SITE  
ENVIRONMENTAL SENSITIVITY**

**EIA Reference number:** NW DEDECT

**Project name:** NewInvest 29 Pry Ltd

**Project title:** NewInvest poultry Site #983

**Date screening report generated:** 28/04/2025 11:51:52

**Applicant:** Mr J Pauley

**Compiler:** GECS - Pieter Colyn

**Compiler signature:**

.....

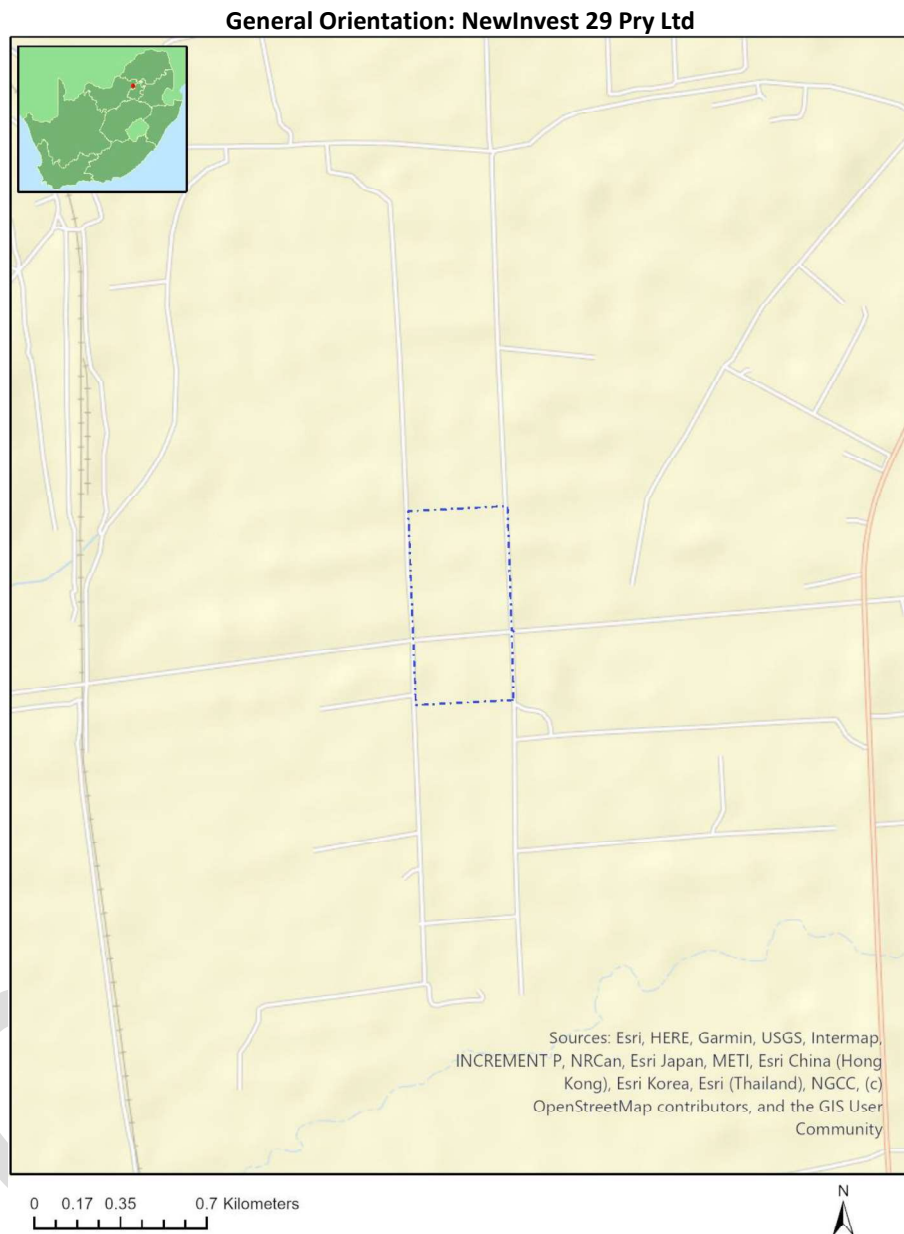
**Application Category:** Agriculture\_Forestry\_Fisheries|Animal Production

## Table of Contents

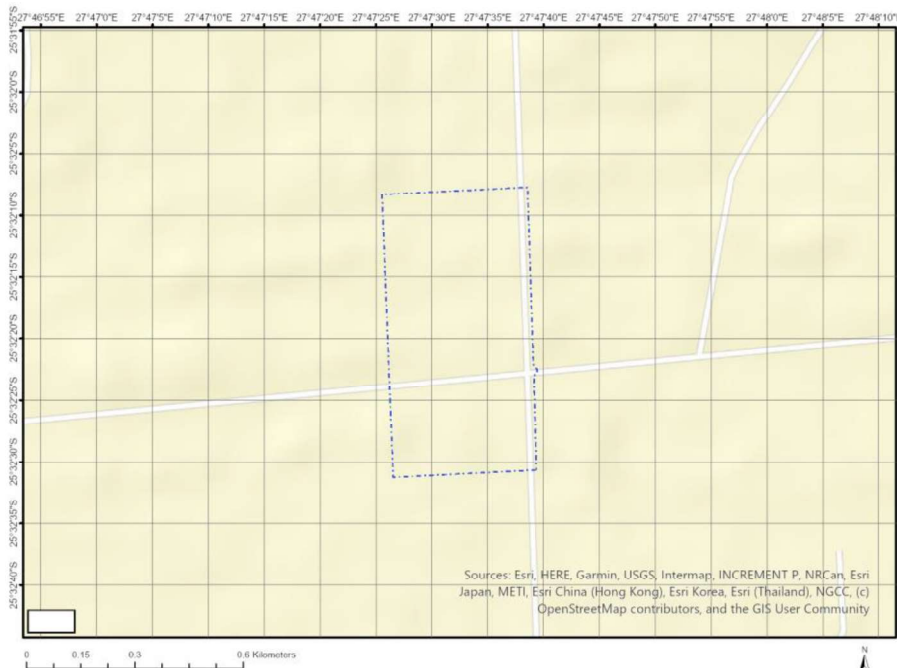
Proposed Project Location .....	3
Orientation map 1: General location .....	3
Map of proposed site and relevant area(s) .....	4
Cadastral details of the proposed site .....	4
Wind and Solar developments with an approved Environmental Authorisation or applications under consideration within 30 km of the proposed area .....	4
Environmental Management Frameworks relevant to the application .....	5
Environmental screening results and assessment outcomes .....	5
Relevant development incentives, restrictions, exclusions or prohibitions .....	6
Proposed Development Area Environmental Sensitivity .....	6
Specialist assessments identified .....	6
Results of the environmental sensitivity of the proposed area .....	8
MAP OF RELATIVE AGRICULTURE THEME SENSITIVITY .....	8
MAP OF RELATIVE ANIMAL SPECIES THEME SENSITIVITY .....	9
MAP OF RELATIVE AQUATIC BIODIVERSITY THEME SENSITIVITY .....	10
MAP OF RELATIVE ARCHAEOLOGICAL AND CULTURAL HERITAGE THEME SENSITIVITY .....	11
MAP OF RELATIVE CIVIL AVIATION THEME SENSITIVITY .....	12
MAP OF RELATIVE DEFENCE THEME SENSITIVITY .....	13
MAP OF RELATIVE PALEONTOLOGY THEME SENSITIVITY .....	14
MAP OF RELATIVE PLANT SPECIES THEME SENSITIVITY .....	15
MAP OF RELATIVE TERRESTRIAL BIODIVERSITY THEME SENSITIVITY .....	16

## Proposed Project Location

### Orientation map 1: General location



## Map of proposed site and relevant area(s)



## Cadastral details of the proposed site

Property details:

No	Farm Name	Farm/ Erf No	Portion	Latitude	Longitude	Property Type
1	HARTEBEESTPOORT C	419	0	25°33'54.08S	27°47'11.7E	Farm
2	HARTEBEESTPOORT C	419	983	25°32'19.39S	27°47'32.5E	Farm Portion

Development footprint<sup>1</sup> vertices:

No development footprint(s) specified.

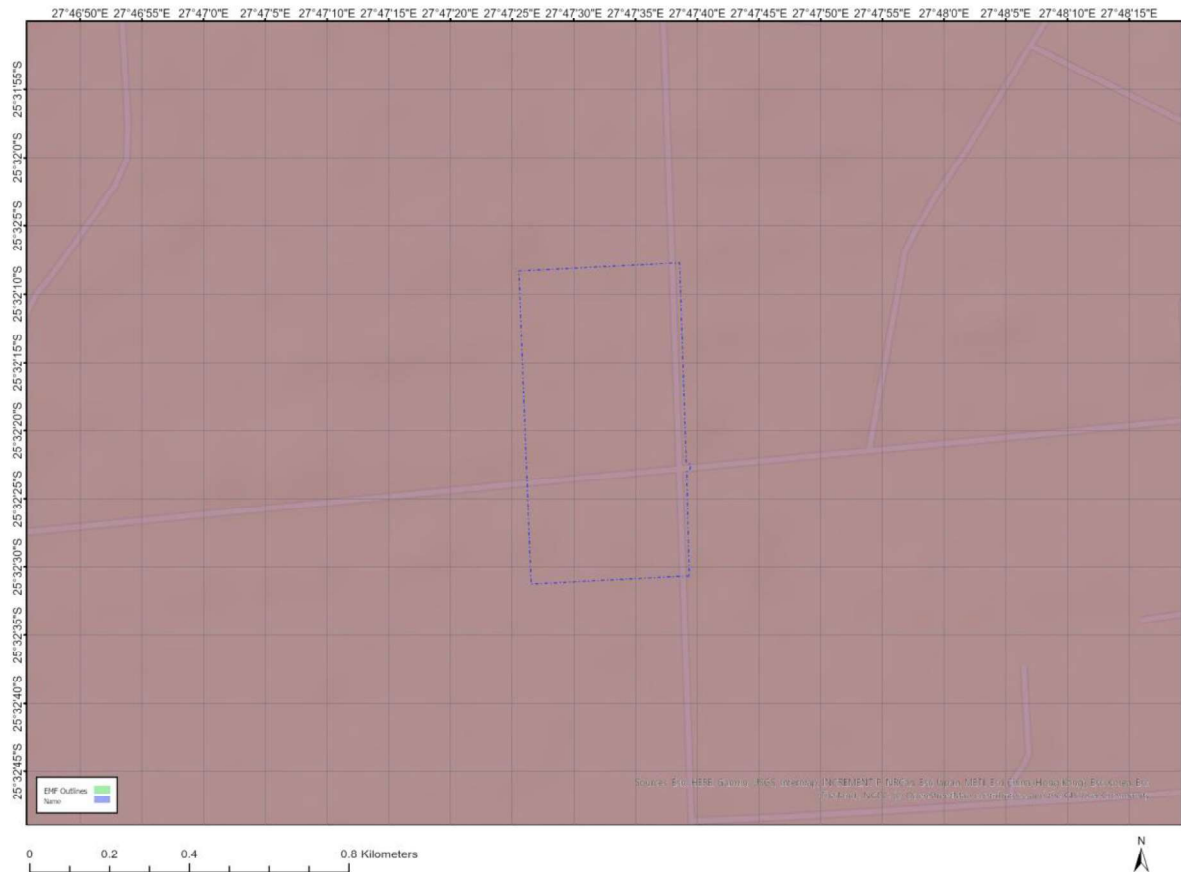
## Wind and Solar developments with an approved Environmental Authorisation or applications under consideration within 30 km of the proposed area

No	EIA Reference No	Classification	Status of application	Distance from proposed area (km)
1	14/12/16/3/3/1/492	Solar PV	Approved	12.4
2	14/12/16/3/3/1/1842	Wind	Approved	18.9
3	14/12/16/3/3/1/491	Solar PV	Approved	12.4

<sup>1</sup> “development footprint”, means the area within the site on which the development will take place and includes all ancillary developments for example roads, power lines, boundary walls, paving etc. which require vegetation clearance or which will be disturbed and for which the application has been submitted.

4	14/12/16/3/3/2/510/AM1	Solar PV	Approved	12.4
5	14/12/16/3/3/2/850	Solar PV	Approved	18.9
6	12/12/20/2172	Solar PV	Approved	19.5
7	12/12/20/2220/AM2	Solar PV	Approved	15.5
8	14/12/16/3/3/2/850/AM2	Solar PV	Approved	18.9
9	14/12/16/3/3/1/1297	Solar PV	Approved	28.2

## Environmental Management Frameworks relevant to the application



<b>Environmental Management Framework</b>	<b>LINK</b>
Bojanala EMF	<a href="https://screening.environment.gov.za/ScreeningDownloads/EMF/BojanalaEMF.pdf">https://screening.environment.gov.za/ScreeningDownloads/EMF/BojanalaEMF.pdf</a>

## Environmental screening results and assessment outcomes

The following sections contain a summary of any development incentives, restrictions, exclusions or prohibitions that apply to the proposed development site as well as the most environmental sensitive features on the site based on the site sensitivity screening results for the application classification that was selected. The application classification selected for this report is:

**Agriculture\_Forestry\_Fisheries|Animal Production.**

## Relevant development incentives, restrictions, exclusions or prohibitions

The following development incentives, restrictions, exclusions or prohibitions and their implications that apply to this site are indicated below.

Incentive, restriction or prohibition	Implication
Air Quality-Waterberg-Bojanala Priority Area	<a href="https://screening.environment.gov.za/ScreeningDownloads/DevelopmentZones/gg39489_nn1207a.pdf">https://screening.environment.gov.za/ScreeningDownloads/DevelopmentZones/gg39489_nn1207a.pdf</a>

## Proposed Development Area Environmental Sensitivity

The following summary of the development site environmental sensitivities is identified. Only the highest environmental sensitivity is indicated. The footprint environmental sensitivities for the proposed development footprint as identified, are indicative only and must be verified on site by a suitably qualified person before the specialist assessments identified below can be confirmed.

Theme	Very High sensitivity	High sensitivity	Medium sensitivity	Low sensitivity
Agriculture Theme	X			
Animal Species Theme		X		
Aquatic Biodiversity Theme				X
Archaeological and Cultural Heritage Theme				X
Civil Aviation Theme		X		
Defence Theme				X
Paleontology Theme			X	
Plant Species Theme			X	
Terrestrial Biodiversity Theme	X			

## Specialist assessments identified

Based on the selected classification, and the known impacts associated with the proposed development, the following list of specialist assessments have been identified for inclusion in the assessment report. It is the responsibility of the EAP to confirm this list and to motivate in the assessment report, the reason for not including any of the identified specialist study including the provision of photographic evidence of the site situation.

No	Specialist assessment	Assessment Protocol
1	Landscape/Visual Impact Assessment	<a href="https://screening.environment.gov.za/ScreeningDownloads/AssessmentProtocols/Gazetted_General_Requirement_Assessment_Protocols.pdf">https://screening.environment.gov.za/ScreeningDownloads/AssessmentProtocols/Gazetted General Requirement Assessment Protocols.pdf</a>
2	Archaeological and Cultural Heritage Impact Assessment	<a href="https://screening.environment.gov.za/ScreeningDownloads/AssessmentProtocols/GuidanceforHIA.pdf">https://screening.environment.gov.za/ScreeningDownloads/AssessmentProtocols/GuidanceforHIA.pdf</a>
3	Palaeontology Impact Assessment	<a href="https://screening.environment.gov.za/ScreeningDownloads/AssessmentProtocols/GuidanceforPIA.pdf">https://screening.environment.gov.za/ScreeningDownloads/AssessmentProtocols/GuidanceforPIA.pdf</a>
4	Terrestrial Biodiversity Impact Assessment	<a href="https://screening.environment.gov.za/ScreeningDownloads/AssessmentProtocols/Gazetted_Terrestrial_Biodiversity_Assessment_Protocols.pdf">https://screening.environment.gov.za/ScreeningDownloads/AssessmentProtocols/Gazetted Terrestrial Biodiversity Assessment Protocols.pdf</a>

5	Aquatic Biodiversity Impact Assessment	<a href="https://screening.environment.gov.za/ScreeningDownloads/AssessmentProtocols/Gazetted Aquatic Biodiversity Assessment Protocols.pdf">https://screening.environment.gov.za/ScreeningDownloads/AssessmentProtocols/Gazetted Aquatic Biodiversity Assessment Protocols.pdf</a>
6	Hydrology Assessment	<a href="https://screening.environment.gov.za/ScreeningDownloads/AssessmentProtocols/Gazetted General Requirement Assessment Protocols.pdf">https://screening.environment.gov.za/ScreeningDownloads/AssessmentProtocols/Gazetted General Requirement Assessment Protocols.pdf</a>
7	Traffic Impact Assessment	<a href="https://screening.environment.gov.za/ScreeningDownloads/AssessmentProtocols/Gazetted General Requirement Assessment Protocols.pdf">https://screening.environment.gov.za/ScreeningDownloads/AssessmentProtocols/Gazetted General Requirement Assessment Protocols.pdf</a>
8	Socio-Economic Assessment	<a href="https://screening.environment.gov.za/ScreeningDownloads/AssessmentProtocols/Gazetted General Requirement Assessment Protocols.pdf">https://screening.environment.gov.za/ScreeningDownloads/AssessmentProtocols/Gazetted General Requirement Assessment Protocols.pdf</a>
9	Ambient Air Quality Impact Assessment	<a href="https://screening.environment.gov.za/ScreeningDownloads/AssessmentProtocols/Gazetted General Requirement Assessment Protocols.pdf">https://screening.environment.gov.za/ScreeningDownloads/AssessmentProtocols/Gazetted General Requirement Assessment Protocols.pdf</a>
10	Plant Species Assessment	<a href="https://screening.environment.gov.za/ScreeningDownloads/AssessmentProtocols/Gazetted Plant Species Assessment Protocols.pdf">https://screening.environment.gov.za/ScreeningDownloads/AssessmentProtocols/Gazetted Plant Species Assessment Protocols.pdf</a>
11	Animal Species Assessment	<a href="https://screening.environment.gov.za/ScreeningDownloads/AssessmentProtocols/Gazetted Animal Species Assessment Protocols.pdf">https://screening.environment.gov.za/ScreeningDownloads/AssessmentProtocols/Gazetted Animal Species Assessment Protocols.pdf</a>

## Results of the environmental sensitivity of the proposed area.

The following section represents the results of the screening for environmental sensitivity of the proposed site for relevant environmental themes associated with the project classification. It is the duty of the EAP to ensure that the environmental themes provided by the screening tool are comprehensive and complete for the project. Refer to the disclaimer.

### MAP OF RELATIVE AGRICULTURE THEME SENSITIVITY



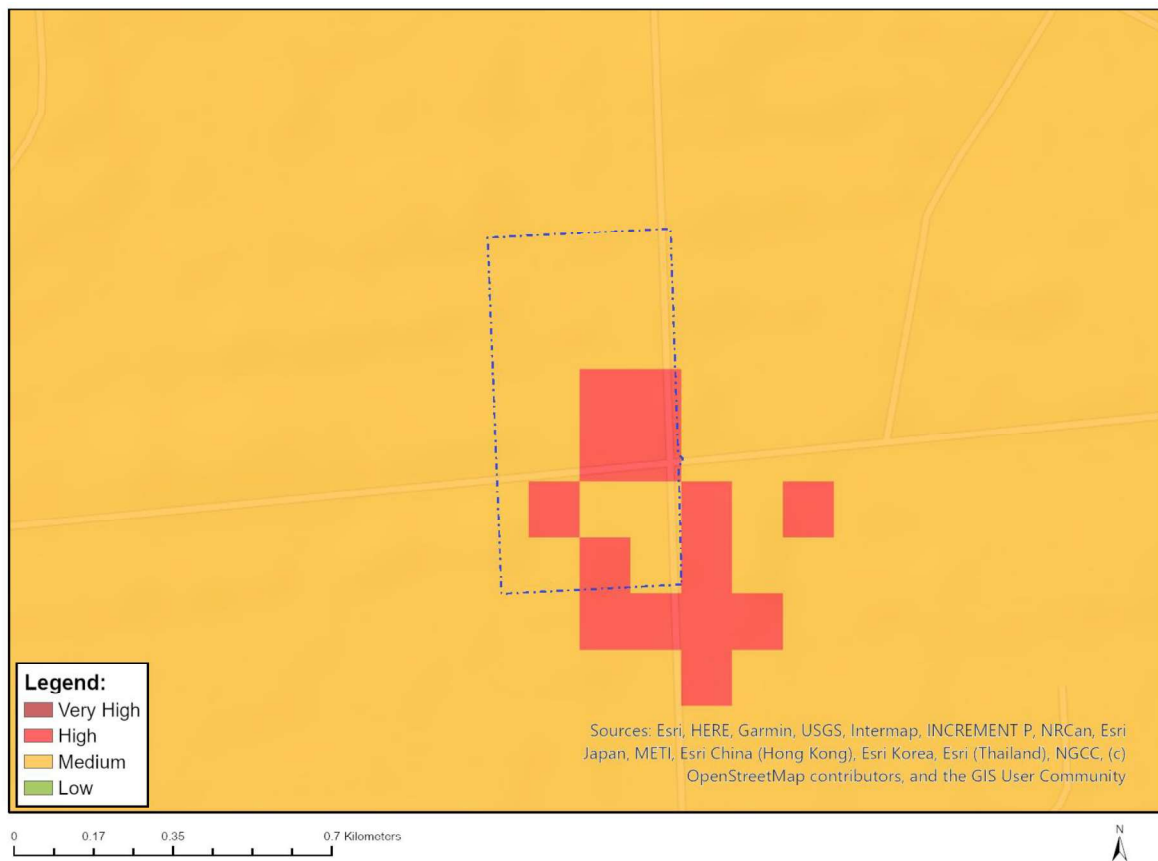
Very High sensitivity	High sensitivity	Medium sensitivity	Low sensitivity
X			

#### Sensitivity Features:

Sensitivity	Feature(s)
High	Rainfed Annual Crop Cultivation / Planted Pastures
Very High	Non-pivot Irrigated Annual Crop Cultivation / Planted Pastures
Very High	11. High
Very High	12. High-Very high
Very High	Crocodile River PAA



## MAP OF RELATIVE ANIMAL SPECIES THEME SENSITIVITY



Where only a sensitive plant unique number or sensitive animal unique number is provided in the screening report and an assessment is required, the environmental assessment practitioner (EAP) or specialist is required to email SANBI at [eiadatarequests@sanbi.org.za](mailto:eiadatarequests@sanbi.org.za) listing all sensitive species with their unique identifiers for which information is required. The name has been withheld as the species may be prone to illegal harvesting and must be protected. SANBI will release the actual species name after the details of the EAP or specialist have been documented.

Very High sensitivity	High sensitivity	Medium sensitivity	Low sensitivity
	X		

### Sensitivity Features:

Sensitivity	Feature(s)
High	Aves-Mycteria ibis
Medium	Mammalia-Chrysospalax villosus
Medium	Mammalia-Crocidura maquassiensis
Medium	Mammalia-Dasymys robertsii

MAP OF RELATIVE AQUATIC BIODIVERSITY THEME SENSITIVITY



Very High sensitivity	High sensitivity	Medium sensitivity	Low sensitivity
			X

Sensitivity Features:

Sensitivity	Feature(s)
Low	Low sensitivity

# MAP OF RELATIVE ARCHAEOLOGICAL AND CULTURAL HERITAGE THEME SENSITIVITY



Very High sensitivity	High sensitivity	Medium sensitivity	Low sensitivity
			X

## Sensitivity Features:

Sensitivity	Feature(s)
Low	Low Sensitivity

MAP OF RELATIVE CIVIL AVIATION THEME SENSITIVITY



Very High sensitivity	High sensitivity	Medium sensitivity	Low sensitivity
	X		

Sensitivity Features:

Sensitivity	Feature(s)
High	Within 8 km of other civil aviation aerodrome

MAP OF RELATIVE DEFENCE THEME SENSITIVITY

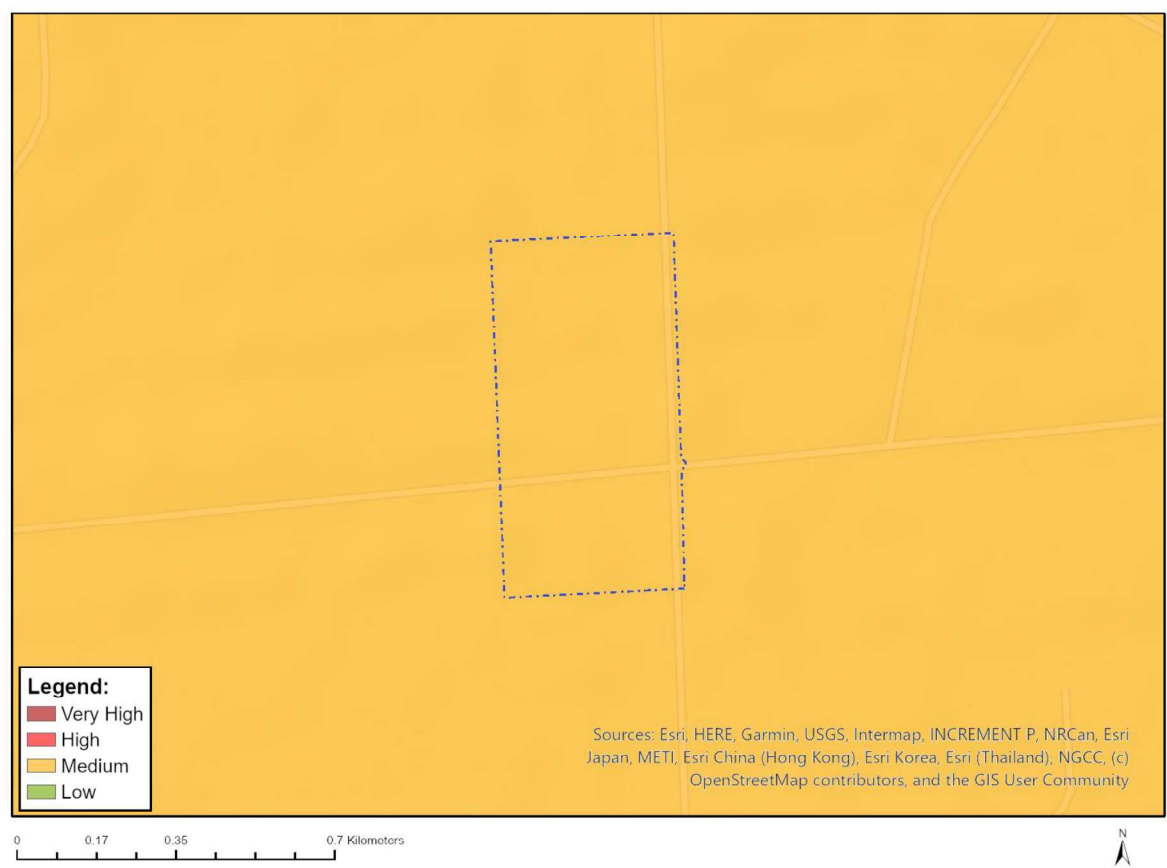


Very High sensitivity	High sensitivity	Medium sensitivity	Low sensitivity
			X

Sensitivity Features:

Sensitivity	Feature(s)
Low	Low Sensitivity

MAP OF RELATIVE PALEONTOLOGY THEME SENSITIVITY

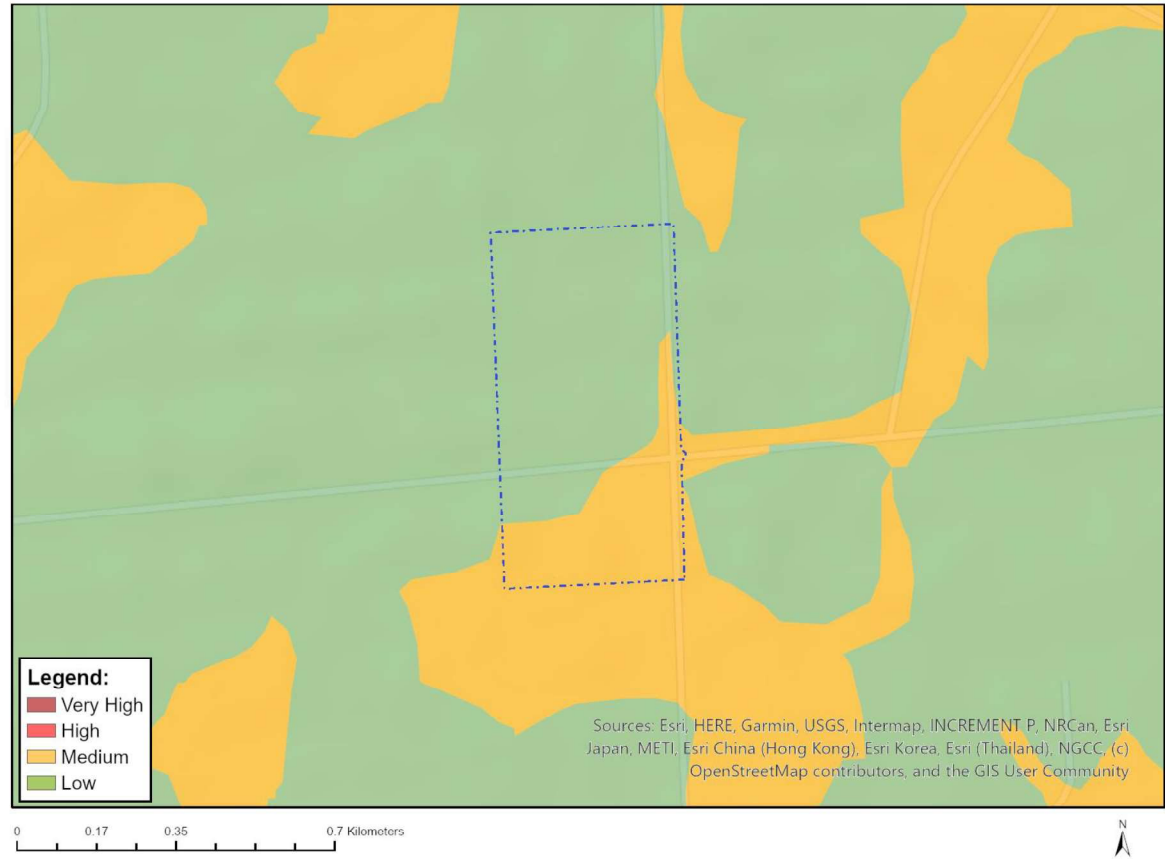


Very High sensitivity	High sensitivity	Medium sensitivity	Low sensitivity
		X	

Sensitivity Features:

Sensitivity	Feature(s)
Medium	Features with a Medium paleontological sensitivity

MAP OF RELATIVE PLANT SPECIES THEME SENSITIVITY



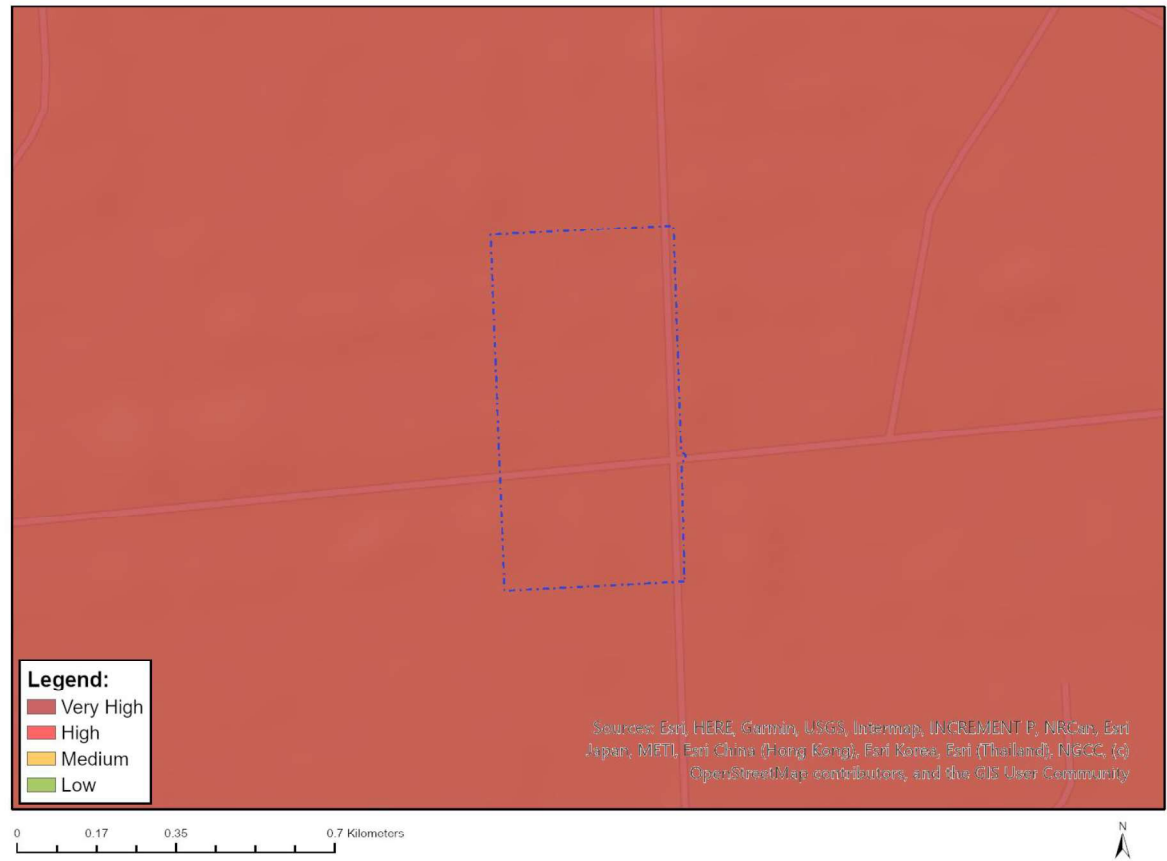
Where only a sensitive plant unique number or sensitive animal unique number is provided in the screening report and an assessment is required, the environmental assessment practitioner (EAP) or specialist is required to email SANBI at [eiadatarequests@sanbi.org.za](mailto:eiadatarequests@sanbi.org.za) listing all sensitive species with their unique identifiers for which information is required. The name has been withheld as the species may be prone to illegal harvesting and must be protected. SANBI will release the actual species name after the details of the EAP or specialist have been documented.

Very High sensitivity	High sensitivity	Medium sensitivity	Low sensitivity
		X	

Sensitivity Features:

Sensitivity	Feature(s)
Low	Low Sensitivity
Medium	Sensitive species 1248

MAP OF RELATIVE TERRESTRIAL BIODIVERSITY THEME SENSITIVITY



Very High sensitivity	High sensitivity	Medium sensitivity	Low sensitivity
X			

Sensitivity Features:

Sensitivity	Feature(s)
Very High	CBA 2
Very High	ESA 2
Very High	National Protected Area Expansion Strategy (NPAES)
Very High	EN_Marikana Thornveld